

Why Should We Build?

In our auditorium is a large banner that reads "Building for the Future... Together with God." On all of our mail out bulletins we see the same message with a bridge with children running across it to indicate that we are building so that

Building for the Future...



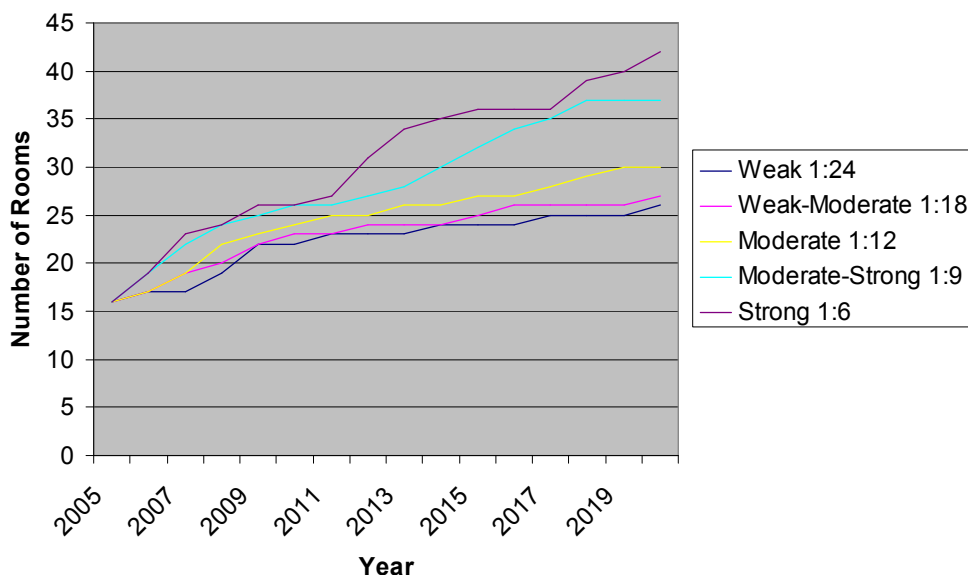
those younger than us will have an easier time crossing. Before we began our building program we heard a message about a 2020 vision that encouraged us to prepare the path for those who would be members of our church in the year 2020. It is certainly good to plan for the future, but it is hard for most people to feel any urgency in building to meet our needs fifteen years from now. It may be hard for some to understand why we need to build a building now.

Consider this. Our Awana program is the most effective outreach ministry of our church. People who would not normally be involved with our church come because of our Awana program. We cannot afford to stifle this program. At the present time we are not at capacity yet, but we are close enough that with the growth rate we know to be possible we could exceed our capacity quickly. Some of the activities would benefit greatly if we had more room right now. For the Awana program, the future is not fifteen years away, it is today.

Our Sunday school is the primary teaching ministry of our church. It is through the Sunday school that we train those who will be leading our church in the years to come. It is imperative that provide our Sunday school teachers with the resources they need to teach their students effectively. One of the most important resources we can provide for our teachers is a classroom that gives them the freedom to teach their students the way their students learn. For those in kindergarten and younger this often involves

activities that can take up a significant amount of space. School age children require less space but often need tables which take up space. Youth and Adults require the least amount of space, but they seldom learn well while sitting in rows listening to a lecture. Other methods of teaching can sometimes require a lot of space. Based on the space requirements and maximum attendance guidance recommended by Alan Raughton and Louis B. Hanks as well as the room assignments and square footage allocated for our existing classes I did an analysis of how many classrooms we will need and when. In my analysis I defined a class growth rate of one person every two years as weak growth, one person per year as moderate growth and two people a year as strong growth. I also assumed that two larger classrooms would be created by removing two walls dividing some of our upstairs

Rooms By Growth Rate



classrooms. This would give us a total of eighteen fair sized classrooms in our existing building. With these assumptions and only weak growth we will need to have additional classroom space by the year 2008 and we will need 8 new classrooms by 2020. If we see moderate growth we will need additional classroom space a year sooner in 2007. We will need 8 new classrooms by 2014 and 12 new classrooms by 2020.

At the current time, there five classes that have an average attendance that is above 80% of the recommended maximum attendance. Studies indicate that a class should begin making plans to split when this point is reached. The future that we are building for is not fifteen years down the road. The future is now.